


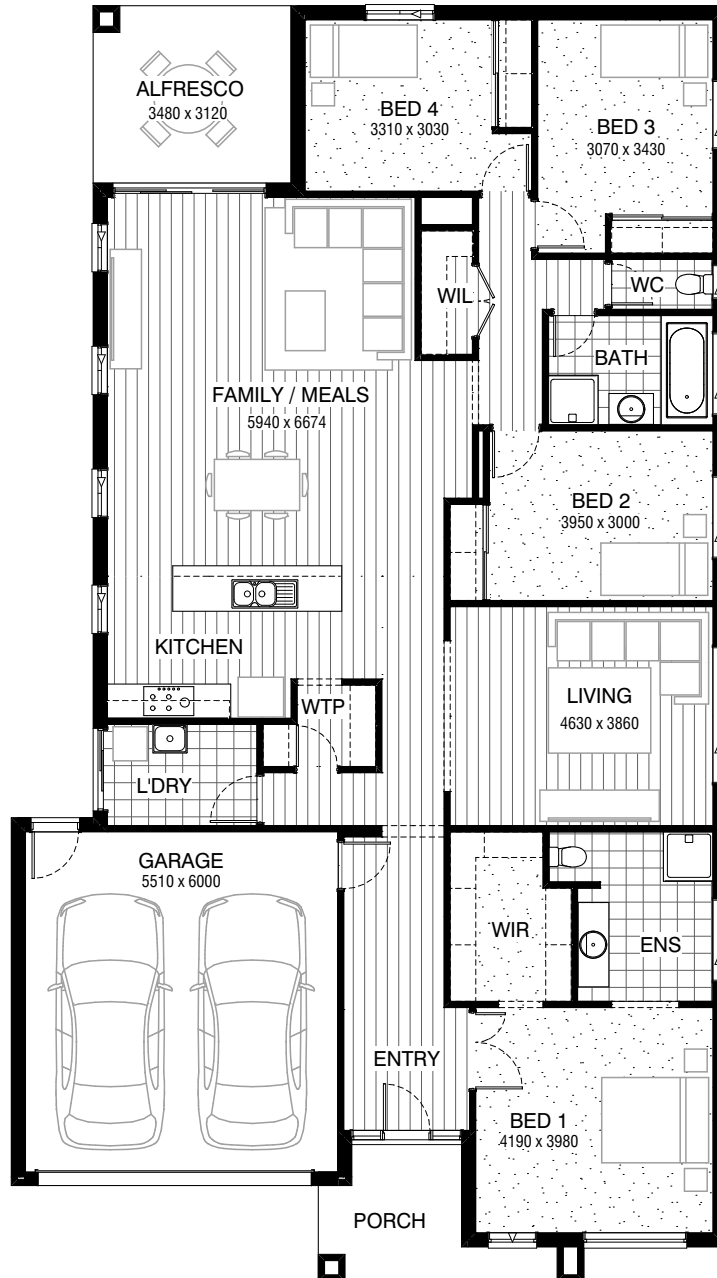


Total squares **27.0sq**

 **4**  **2**  **2**



**FLOORPLAN OPTIONS**

All available ready-to-go floorplan options for this design can be viewed on the following pages, or visit [www.burbank.com.au](http://www.burbank.com.au).

**Facades available:**

Arkley, Drysdale, Haring

**Overall home width 12.59m**

**Overall home length 22.43m**

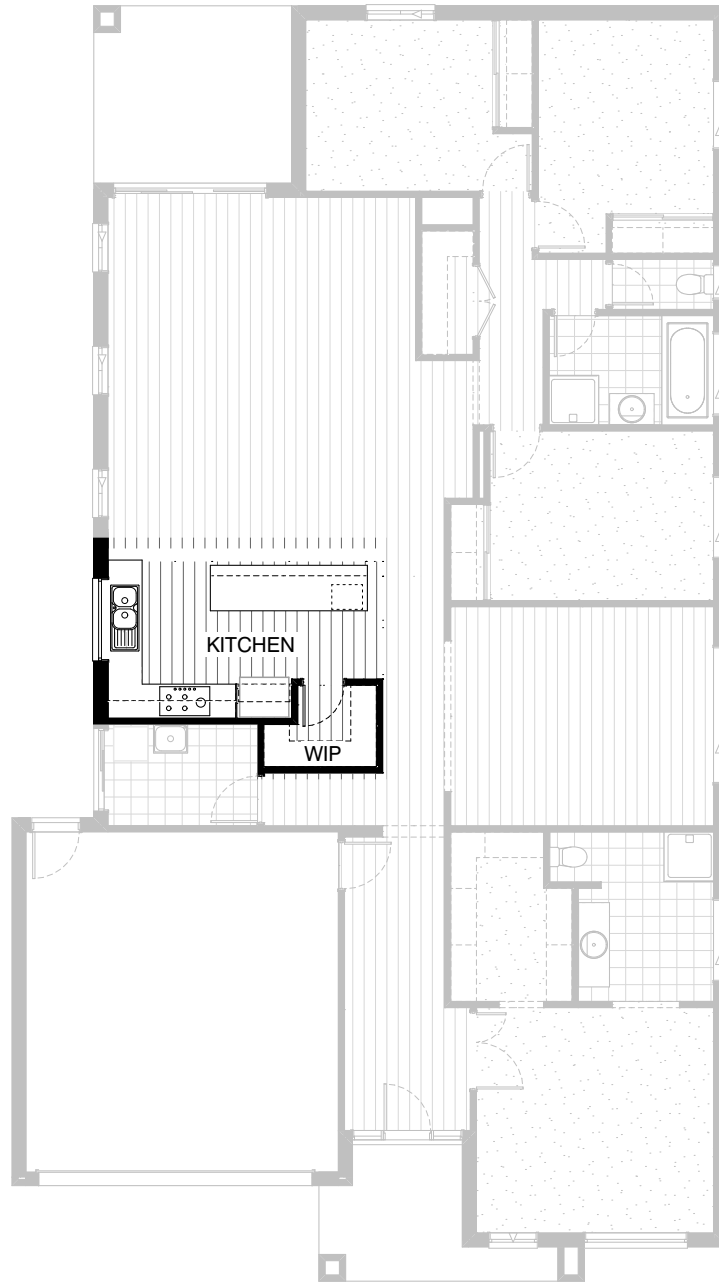
Residence	197.1m <sup>2</sup>	21.2sq
Garage	36.3m <sup>2</sup>	3.9sq
Porch	6.9m <sup>2</sup>	0.7sq
Alfresco	10.9m <sup>2</sup>	1.2sq
<b>Total</b>	<b>251.2m<sup>2</sup></b>	<b>27.0sq</b>

Listed details based on Drysdale facade floorplan (illustrated)

\*Copyright conditions. All photos and illustrations are representative only. Floor plans and specifications may be varied by Burbank without notice, the dimensions are diagrammatic only and a Building Contract with final drawings will display correct dimensions and detail. All designs are the property of Burbank and must not be used, reproduced, copied or varied, wholly or in part without written permission from an authorised Burbank representative. Copyright Burbank Australia Pty Ltd. ABN 91 007 099 872. Builders Registration Number CDB-U-52603.

**Call 13 BURBANK**  
**Visit [burbank.com.au](http://burbank.com.au)**

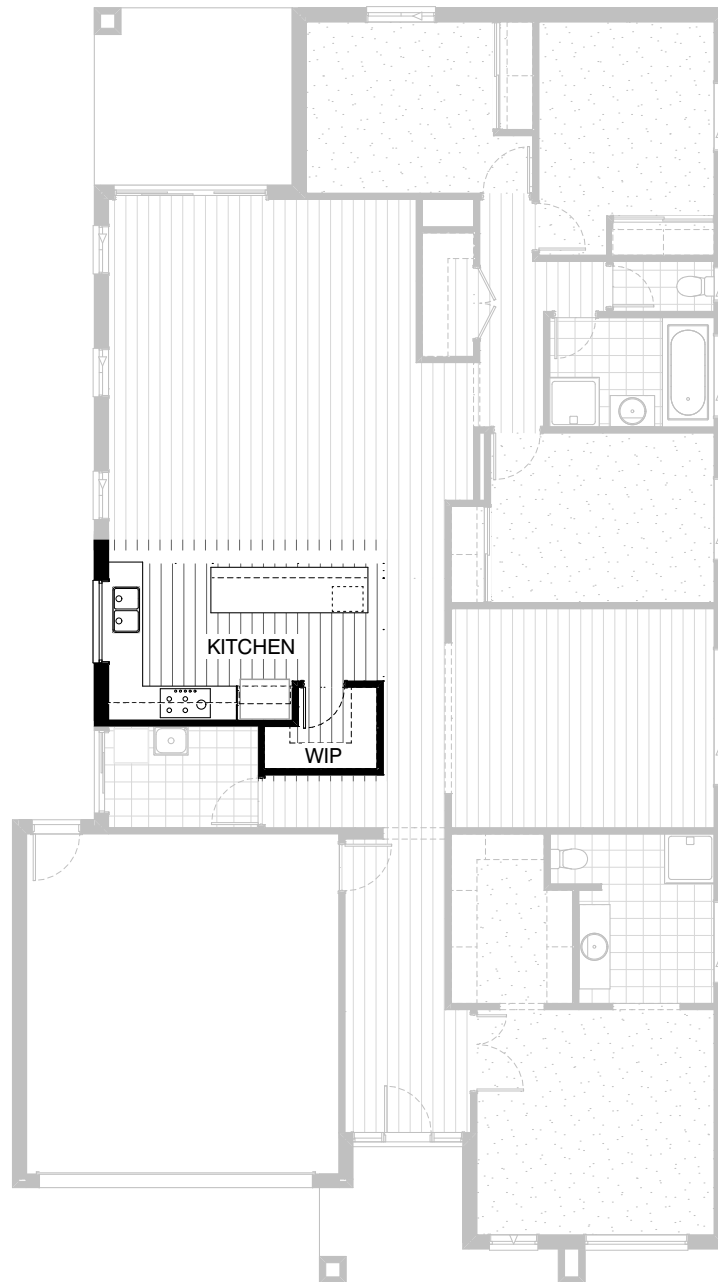
FLOORPLAN OPTIONS



**KITCHEN OPTION  
STANDARD COLOUR BOARD**

Provide Kitchen Option with additional 1no. laminated MW. provision with pot drawer below, 1no. laminated DW. provision, 3no. 800mm and 1no. 450mm and 1no. 400 base cabinets, 1no. 450mm drawer unit, 1no. 900mm base corner carcass with 2/300mm doors, 1no. 400mm and 2no. 450mm overhead cabinets, 1no. 900mm laminated open shelf above refrigerator space, 1no. 900mm underbench oven with 900mm gas cooktop & retractable rangehood above. Delete W.T.P and provide W.I.P with additional 450mm deep shelves and relocate 1no. 720mm flush panel door and delete opening / bulkhead to Pantry and provide 1no. 1200mm x 1450mm aluminium fixed window with no bottom reveal in lieu of standard 1no. 1800mm x 850mm aluminium window with additional tiled splashback and bench top to suit.  
Option contains standard specification

FLOORPLAN OPTIONS



## KITCHEN OPTION UPGRADE COLOUR BOARD

Provide Kitchen Option with additional 1no. laminated MW. provision with pot drawer below, 1no. laminated DW. provision, 3no. 800mm and 1no. 450mm and 1no. 400 base cabinets, 1no. 450mm drawer unit, 1no. 900mm base corner carcass with 2/300mm doors, 1no. 400mm and 2no. 450mm overhead cabinets, 1no. 900mm laminated open shelf above refrigerator space, 1no. 900mm underbench oven with 900mm gas cooktop & retractable rangehood above. Delete W.T.P and provide W.I.P with additional 450mm deep shelves and relocate 1no. 720mm flush panel door and delete opening / bulkhead to Pantry and provide 1no. 1200mm x 1450mm aluminium fixed window with no bottom reveal in lieu of standard 1no. 1800mm x 850mm aluminium window with additional tiled splashback and bench top to suit.  
Option provides upgrade specification

FLOORPLAN OPTIONS




 **4**    **2**    **2**



**ENSUITE OPTION**  
**STANDARD COLOUR BOARD**

Provide Ensuite Upgrade by increasing Ensuite by 200mm and reduce W.I.R. Provide 1200mm x 900mm polymarble shower base with 180mm nib wall to separate WC and 2082mm vanity unit with 2no. basins in lieu of standard. Provide 1027mm x 610mm aluminium sliding window to Ensuite in lieu of standard and remove 1no. run of 450mm shelf and hanging rail from W.I.R and reduce opening / bulkhead width by 200mm to suit. Option contains standard specification

FLOORPLAN OPTIONS

 **4**    **2**    **2**






### ENSUITE OPTION UPGRADE COLOUR BOARD

Provide Ensuite Upgrade by increasing Ensuite by 200mm and reduce W.I.R. Provide 1800mm x 900mm tiled shower base with tiled niche & 180mm nib wall to separate WC and 2082mm vanity unit with 2no. basins in lieu of standard.  
Provide 1027mm x 610mm aluminium sliding window to Ensuite in lieu of standard and remove 1no. run of 450mm shelf and hanging rail from W.I.R and reduce opening / bulkhead width by 200mm to suit.  
Option provides upgrade specification

\*Copyright conditions. All photos and illustrations are representative only. Floor plans and specifications may be varied by Burbank without notice, the dimensions are diagrammatic only and a Building Contract with final drawings will display correct dimensions and detail. All designs are the property of Burbank and must not be used, reproduced, copied or varied, wholly or in part without written permission from an authorised Burbank representative. Copyright Burbank Australia Pty Ltd. ABN 91 007 099 872. Builders Registration Number CDB-U-52603.

FLOORPLAN OPTIONS


 **4**    **2**    **2**



### LAUNDRY OPTION STANDARD COLOUR BOARD

Provide Laundry Option including s.s.  
inset trough in 32mm laminated bench top,  
1no. 800mm base cabinet,  
2no. 900mm overhead cabinets,  
additional tiled splashback and bench top to suit.  
Option contains standard specification

**FLOORPLAN OPTIONS**




 **4**    **2**    **2**

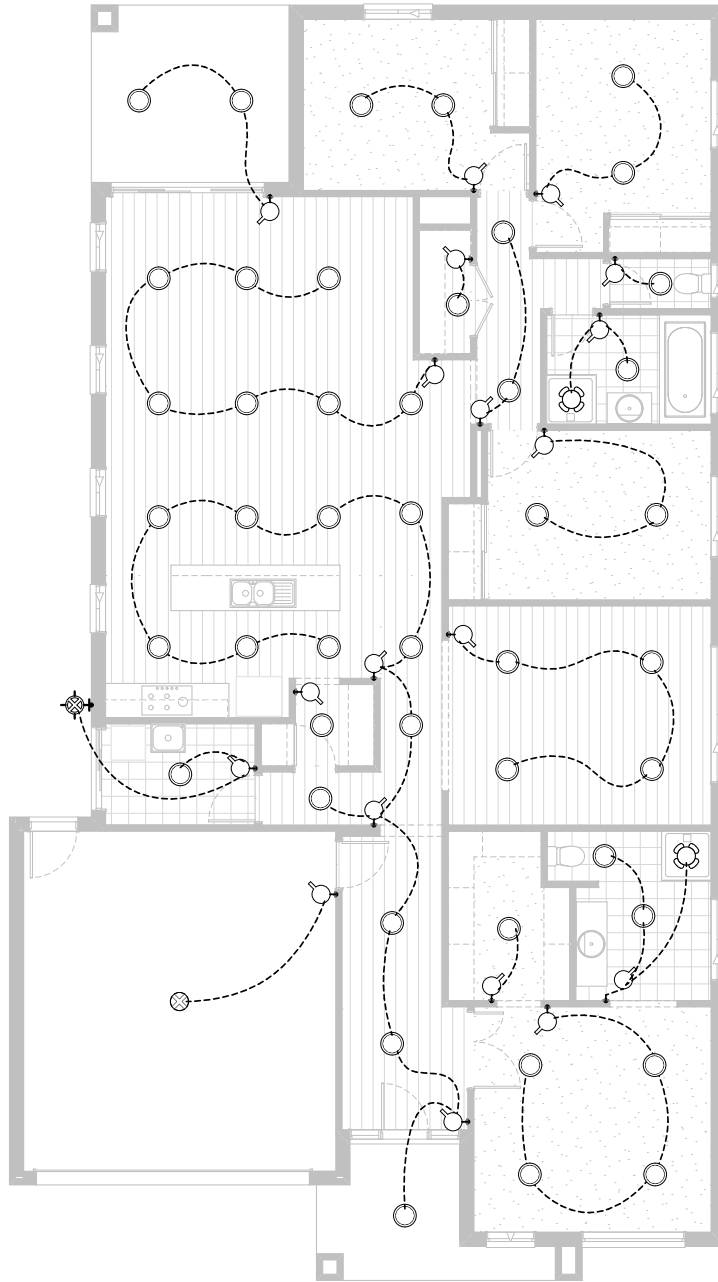


**LAUNDRY OPTION  
UPGRADE COLOUR BOARD**

Provide Laundry Option including s.s.  
inset trough in stone bench top,  
1no. 800mm base cabinet,  
2no. 900mm overhead cabinets,  
additional tiled splashback and bench top to suit.  
Option provides upgrade specification

**FLOORPLAN OPTIONS**

 **4**    **2**    **2**



**Option ELE-1**

Provide LED lighting upgrade